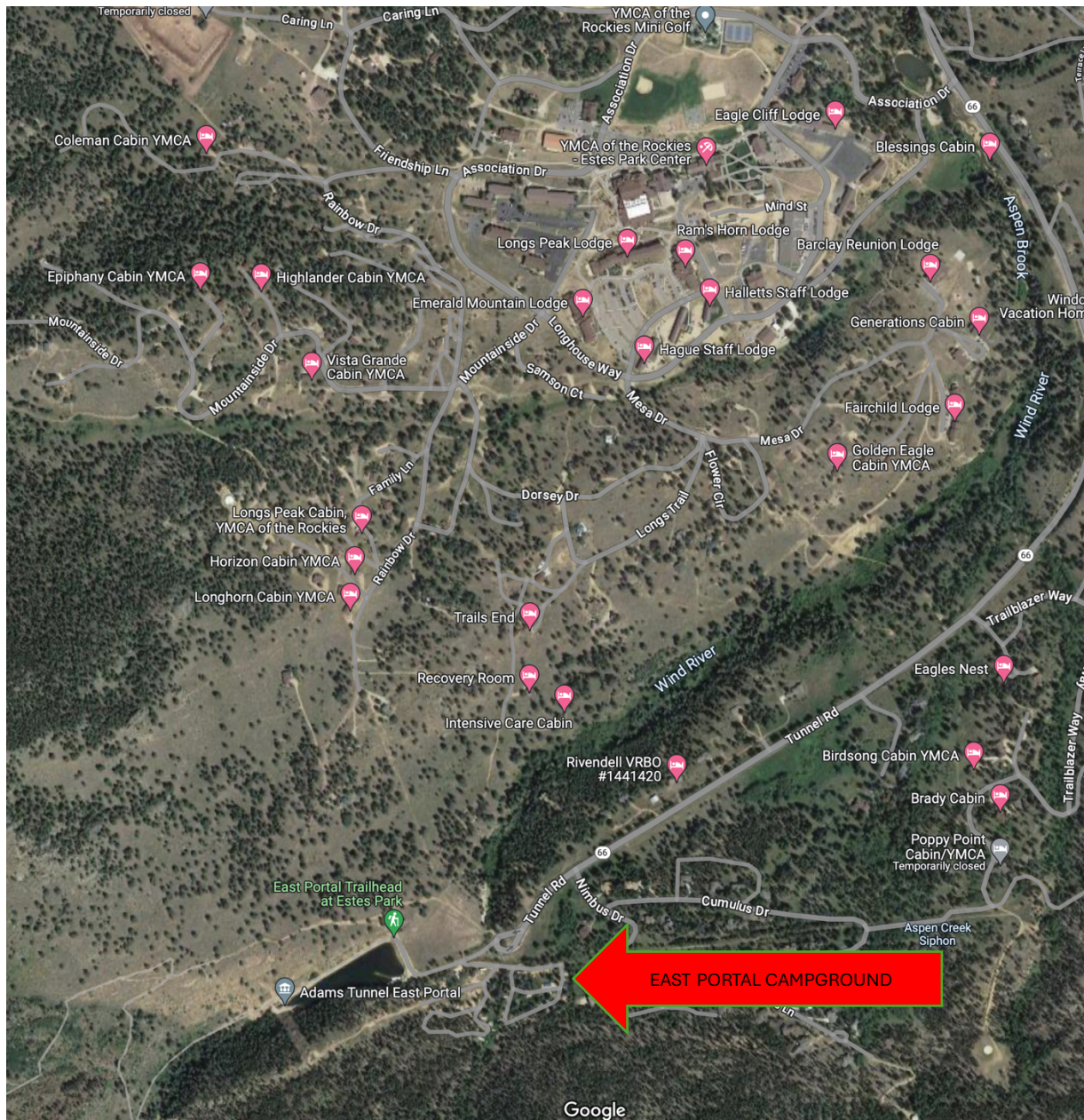


Camping option for FWS Reunion in Estes Park, Colorado June 14 – 17, 2024

Estes Park Campground at East Portal • 3420 Tunnel Road • Elevation 8,300 ft.

This very popular campground is located at an elevation of 8,300 feet and borders the YMCA of the Rockies campus. There are wonderful views of the snow covered peaks in Rocky Mountain National Park and access to the East Portal Reservoir which has ample opportunities for fishing. This double loop campground offers shady sites suitable for tenters and campers with small RVs and trailers shorter than 22 feet in length. It is especially well-suited for families and outdoor enthusiasts looking to explore nearby nature and trails in Rocky Mountain National Park. Sites at this campground open up to views of Rocky Mountain National Park and starry nighttime skies. A mature blend of ponderosa and lodgepole pines interspersed with groves of aspens makes it a wonderful home away from home. It is an ideal setting for guests seeking recreation and relaxation. The camping season runs from Memorial Weekend to mid-September.



East Portal Map



NATURAL FEATURES: The campground is heavily shaded and is located on a sloping hillside framed by granite outcroppings on the ridgeline above. Inner roads are primitive and narrow, which make navigating large rigs challenging. Sites are relatively small and are better suited for tenters and small trailers. Wildlife in the area abounds. Elk and deer frequent the campground on a regular basis. Black bears are also present, which makes responsible food storage a high priority. Fox, coyote, raptors, and a wide variety of small mammals and birds are common sightings.

ON-SITE FACILITIES: The Estes Park Campground at East Portal has 66 sites suitable for tents and small trailers and RVs. There is a maximum length of 22 feet for RVs. All sites are equipped with picnic tables and campfire rings, some with ADA accessibility. Guests also have access to drinking water, flush toilets, hot showers, water & electric hookups, dump station, firewood and ice sales, and a playground for the kids. *Cell phone service is spotty and there is no wi-fi, so please plan accordingly.*

RECREATION: For hikers, taking a walk on a trail located just west of the reservoir, provides access to many other trails within Rocky Mountain National Park including the extremely popular Glacier Basin and Sprague Lake areas. The nearby Wind River trail is a peaceful and uncrowded route which will take you to an area of the National Park that most visitors don't get to see. There's a multi-use singletrack connecting the campground to the YMCA that's great for mountain biking as well. Don't forget to bring your fishing gear to try your luck at the East Portal Reservoir just a few steps away from the campground. Our [Rec Center](#) offers leisure and lap pools, hot tub, indoor track, group fitness classes, weights and aerobic machines as well as on-site child watch services. We have two golf course locations with [18-Hole](#), [9-Hole](#) and [Disc Golf](#). Our [Marina](#) has bike and boat rentals as well as a pavilion to rent for family gatherings.

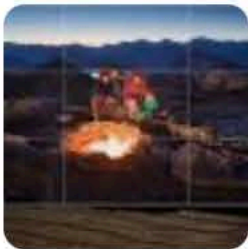
NEARBY ATTRACTIONS: The nearby town of Estes Park is a popular destination for visitors to the area. From hiking, biking, horseback riding, boating, golfing, and world-class fly fishing, to family-friendly activities like go carts and mini golf, there are a multitude of outdoor opportunities in our mountain town. For more information, visit VisitEstesPark.com.

Reservations can be made online at www.reserveamerica.com or by calling (800)964-7806



Visit Estes Park

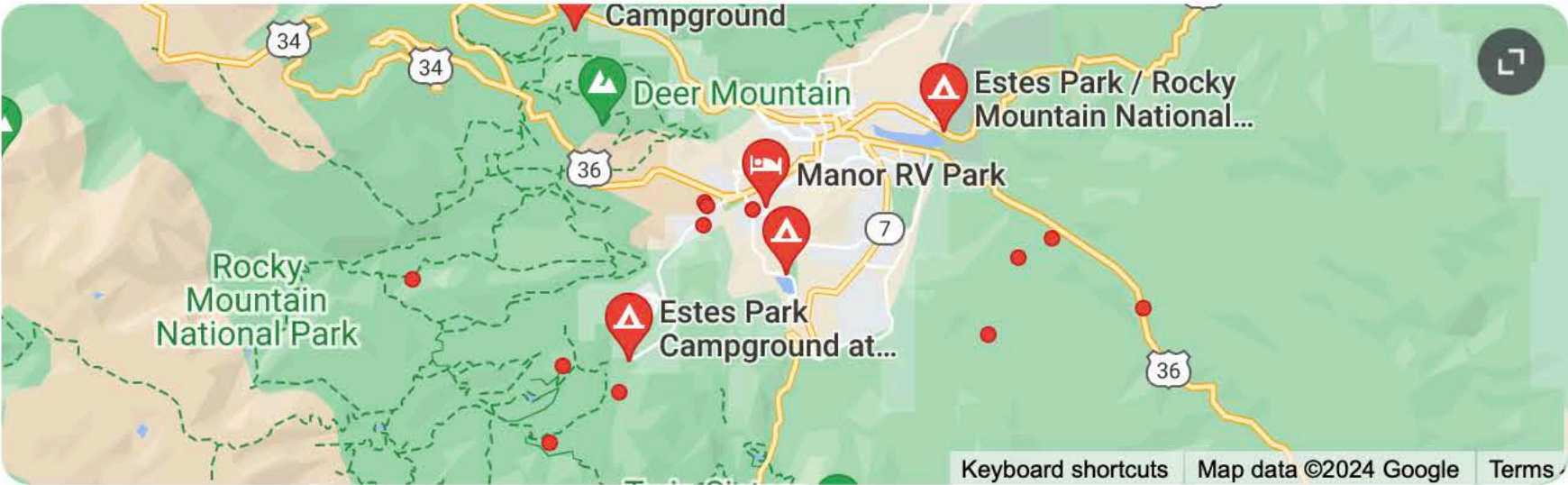
<https://www.visitestespark.com> › camping ⋮



Camping in Estes Park | Rocky Mountain National Park

Campgrounds in **Rocky Mountain National Park** offer unique, wilderness-meets-community experiences for couples, families and groups. **Camping** fees are \$26 per site ...

Places ⋮



Rating ▾

Hours ▾

Estes Park Campground at Mary's Lake

4.3 ★★★★★ (662) · Campground
2120 Marys Lake Rd
Campground with a pool & fishing



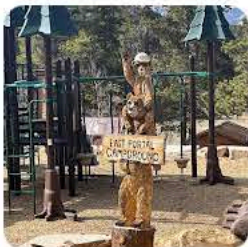
Estes Park / Rocky Mountain National Park KOA Holiday

4.4 ★★★★★ (674) · Campground
2051 Big Thompson Ave
👤 "Very friendly staff and prices reasonable for estes park."



Estes Park Campground at East Portal

4.6 ★★★★★ (252) · Campground
3420 Tunnel Rd
Quiet wooded area with large campsites



More places →